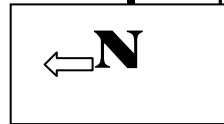


Rockvale Ave.

Citrus Ave ↑

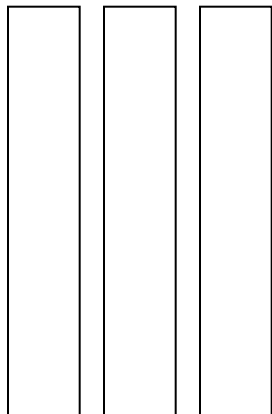
Baseline Rd.

210 FRY



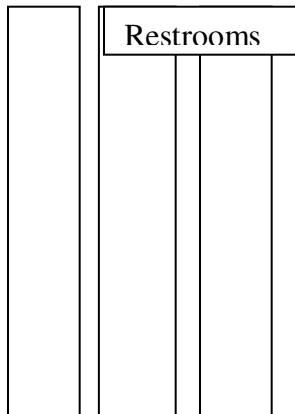
Cerritos Ave.

**Additional Parking**



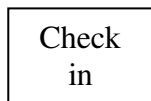
Library

**Quad**



Restrooms

Restrooms  
Spectators Entrance



Check  
in

**Snack  
bar**

bar



Office

Hospitality  
Room

Boys Locker Room



**Gym**

Staging

Girls Locker Room

**Fields**

**Warm Up  
Basketball**

**Bus & Trailer Parking**



**Spectator Parking**

5<sup>th</sup> Street

# GYM DIAGRAM

Do not print this form. Simply save it to your local hard drive and click the check boxes and enter the information as appropriate. Be sure and save the file once you are done.

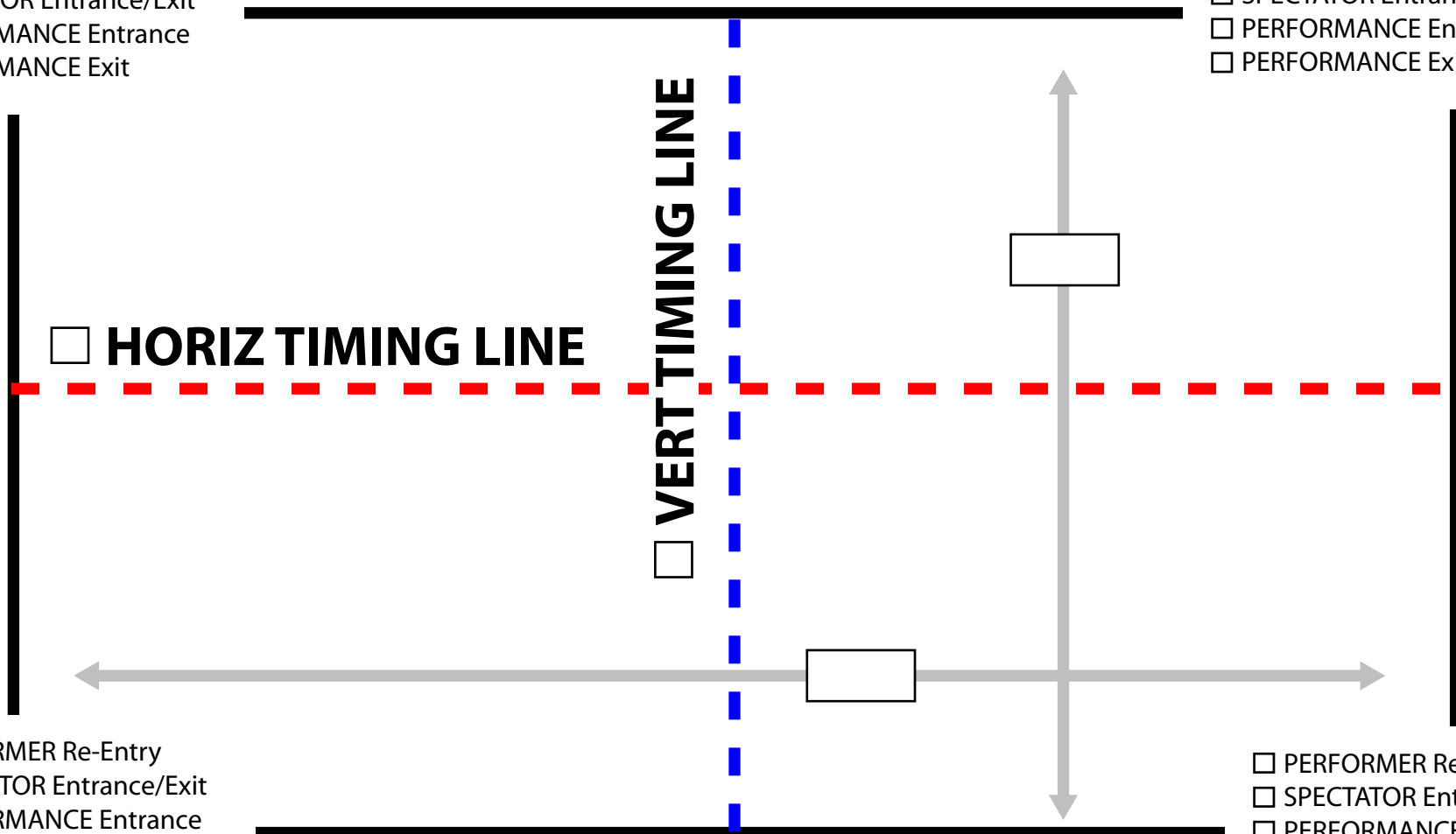
1 - Check the boxes to show entrances and exits for spectators, performers and the performances.

2 - Check the box for either Horizontal or Vertical Timing Line.

3 - Enter the gym floor dimensions in the text boxes on the gray arrows. Be sure to measure from wall to wall for width and front row to front row of the bleachers.

- PERFORMER Re-Entry
- SPECTATOR Entrance/Exit
- PERFORMANCE Entrance
- PERFORMANCE Exit

- PERFORMER Re-Entry
- SPECTATOR Entrance/Exit
- PERFORMANCE Entrance
- PERFORMANCE Exit

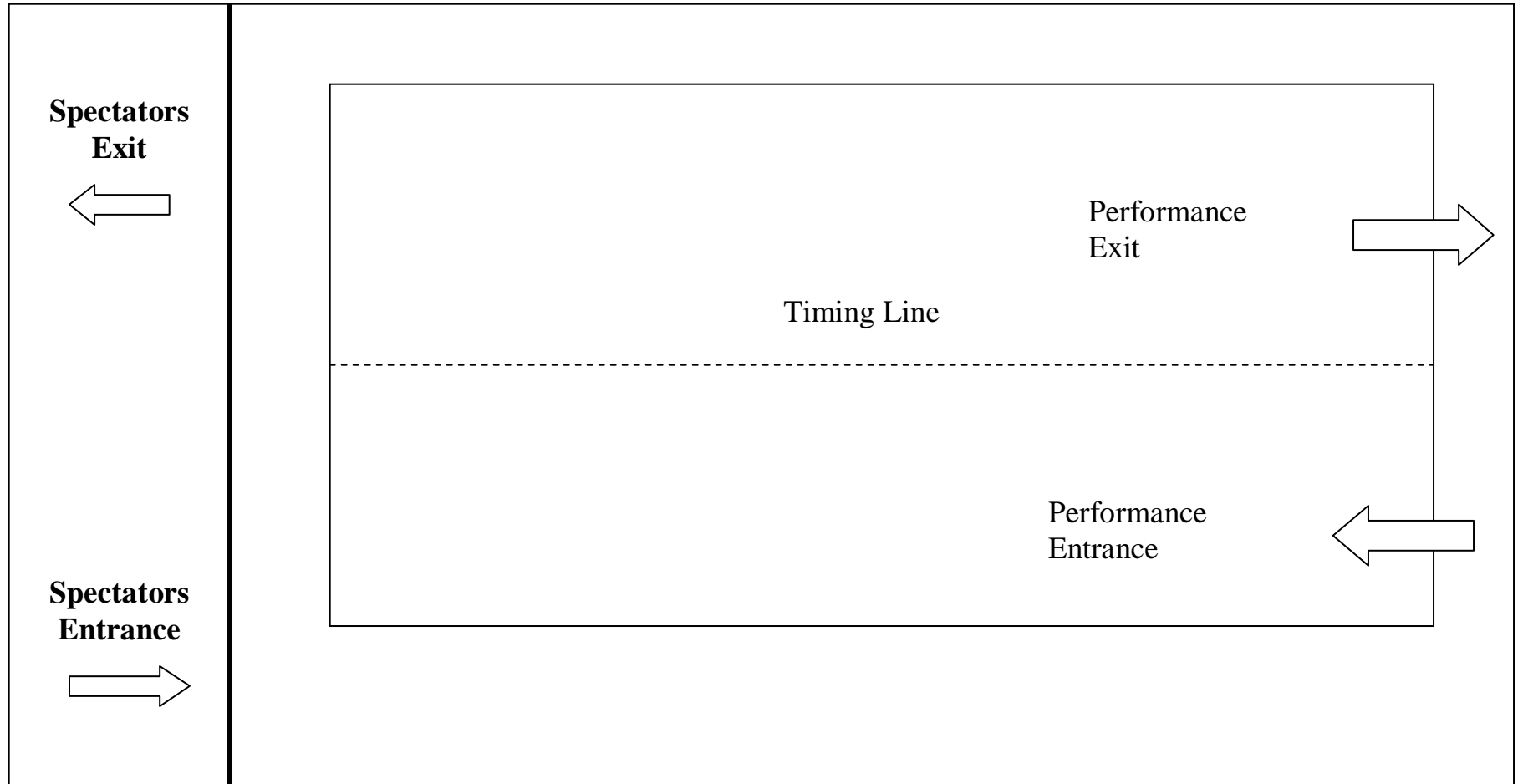


- PERFORMER Re-Entry
- SPECTATOR Entrance/Exit
- PERFORMANCE Entrance
- PERFORMANCE Exit

- PERFORMER Re-Entry
- SPECTATOR Entrance/Exit
- PERFORMANCE Entrance
- PERFORMANCE Exit

**AUDIENCE**

# Azusa High School Gym Set-up

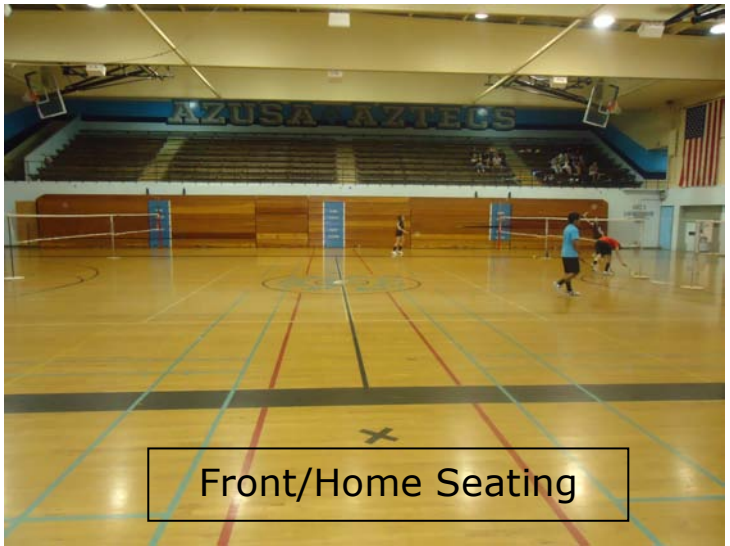


**Judges  
downstairs**





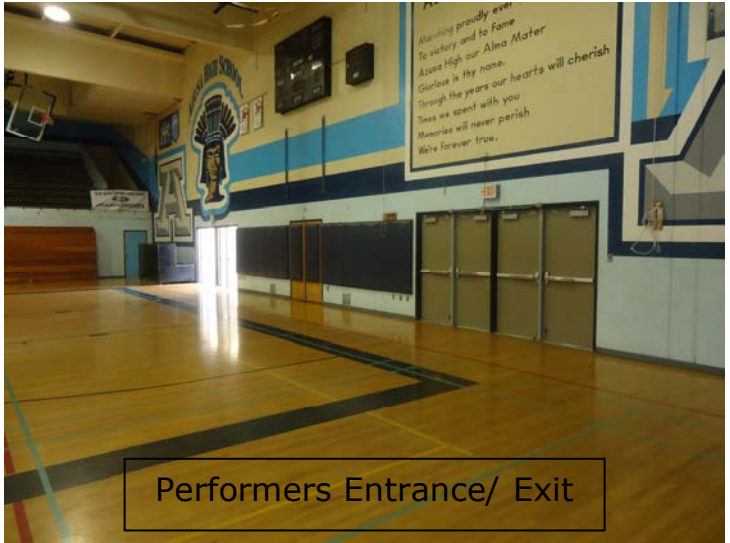
Back/ Team Seating



Front/Home Seating



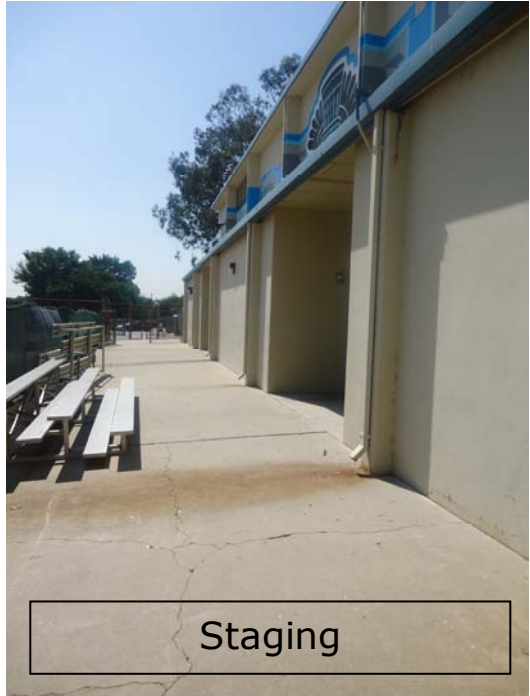
Judges View



Performers Entrance/ Exit



4 door entrance; grey bar comes out



Staging